



County Office of Education Environmental Literacy Community of Practice

2024-25 Virtual Meetings



CALIFORNIA
ENVIRONMENTAL
LITERACY
INITIATIVE

Agenda

- Welcome and Land Acknowledgement
- Community Based Partners Introduction
- Discussion Breakouts
- The CBP Toolkit
- Discussion Breakouts
- The CAELI Partner Portal
- Closing





Welcome



CALIFORNIA
ENVIRONMENTAL
LITERACY
INITIATIVE

Land Acknowledgement: Appreciation for Indigenous Knowledge and Community



The Forest for the Trees

By Rena Priest

I have seen a tree split in two
from the weight of its opposing branches.
It can survive, though its heart is exposed.
I have seen a country do this too.

I have heard an elder say
that we must be like the willow—
bend not to break.
I have made peace this way.

My neighbors clear-cut their trees,
leaving mine defenseless. The arborist
says they'll fall in the first strong wind.
Together we stand. I see this now.

I have seen a tree grown around
a bicycle, a street sign, and a chainsaw,
absorbing them like ingredients
in a great melting pot.

When we speak, whether or not
we agree, the trees will turn
the breath of our words
from carbon dioxide into air—

give us new breath
for new words,
new chances to listen,
new chances to be heard.



CALIFORNIA
ENVIRONMENTAL
LITERACY
INITIATIVE

Connecting

Share in the chat:

How are you doing in this moment using the
5 finger check in.

5 fingers = I am feeling amazing.

0 fingers = I am really struggling.

No explanations!

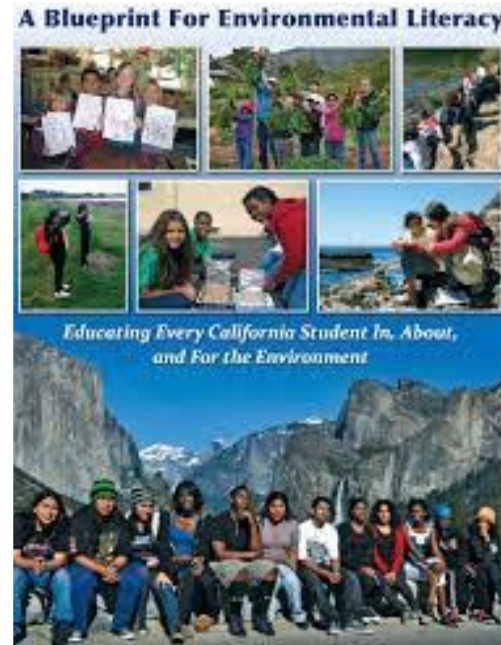
Who are the Hub Trees in your networks? What is something you are grateful for in your community?



CALIFORNIA
ENVIRONMENTAL
LITERACY
INITIATIVE

What is CAELI?

The [California Environmental Literacy Initiative \(CAELI\)](#), led by Ten Strands, works statewide to change the education system so that it supports environmental literacy with a focus on equity, inclusion, and cultural relevance for all students.



This collective impact network works with guidance from a leadership council composed of action oriented innovation hubs.



CAELI COE Innovation Hub

Members in the CAELI [County Office of Education \(COE\) Innovation Hub](#) have a role that provides some type of backbone support for environmental literacy, sustainability, and climate resilient efforts within their county region's K12 schools.



2024-25 Map of COE Engagement with CAELI
Peach: COEs that engaged in the COP or other CAELI Programs
Orange: CAELI COE Innovation Hub



COP Objectives

By sharing our resources and innovative practices, this COP intends to build the capacity of COEs to serve as regional backbone support for the following outcomes in each county:

- Supporting access to regular and ongoing environmental and outdoor learning experiences for students, by working with school districts, teachers, and community-based partners. This work centers on supporting those from the most vulnerable and marginalized communities.
- Supporting development of district-wide plans that include experiences for students at all grade levels, with an emphasis on low income students and students of color.
- Applying frameworks that integrate environmental literacy and sustainability into the curriculum, campus, community, and culture.
- Infusing sustainability principles and practices into COE core operations.





Community Based Partners Introduction



CALIFORNIA
ENVIRONMENTAL
LITERACY
INITIATIVE

What are Community Based Partners and how do County Offices of Education (COEs) work with them?



Typical Community Based Partners (CBPs)

Environmental Education Providers

Field Experiences & In-Classroom Programs, Open Spaces and Parks (national, state, county, city, land trust, etc.), natural resources management agencies, museums, aquariums, zoos, residential outdoor education, etc.

**Supplemental
Curriculum Partners**

**Industry and
Business**

**Expanded Learning
Partners**

**Research
Partners**

**Social Services
Youth
Development**

**Green Facilities
and Operations**

**Funding
Partners**



TYPES OF CBPs

WHAT TYPES OF ORGANIZATIONS MIGHT MAKE UP A CBP NETWORK?

- After school/expanded learning program providers
- Early learning providers
- Healthcare providers (e.g., hospitals, doctors, clinics)
- Higher education
- Industry/business
- Local curriculum providers
- Municipal/county/district natural resource management agencies
- Air quality
- Energy
- Mosquito and vector control
- Waste management
- Transportation
- Water, including stormwater
- Museums, aquariums, and zoos
- Nonprofit environmental education organizations
- Open spaces, parks, and recreation
- City parks
- County and regional parks
- National parks
- Open space trusts
- State parks
- PreK–16 education liaisons (curriculum and facilities)
- Residential outdoor science schools
- Social service/youth development organizations



Types of Work that CBPs might focus on

- Curriculum
- Content Expertise
- School Programs (field trips, on site, virtual, residential)
- Teacher Workshops
- Funding
- Volunteer and Community Programs
- Technical Assistance

CBPs showcase

Tara Fuad - Executive Director San Diego Children and Nature
Informal Science Director of California Association
of Science Educators



Where can you find Community Based Partners in your area?



Overview

Community-Based Partners

Search

[Clear Filters](#)

Location

Statewide

Topic

All

Programs



CAELI PARTNER PORTAL

Increasing access to impactful environment-based learning for all of California's TK-12 students



COES, let us know if you'd like a free micro-site!
croyer@tenstrands.org

3-5

6-8

9-12

Educators

Community Members

Sort By: Date: Newest first

[Hide map](#)

Community-Based Partners (30 of 186)



Midpeninsula Regional Open Space District

1 program

Los Altos



Marine Science Institute

7 programs

Redwood City



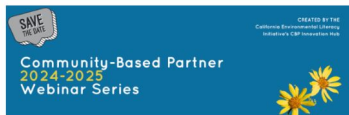
The Student Conservation Association

No programs available

Berkeley

Wanting more information about CBPs

Winter 2024-2025 Webinars



November 20, 2024 - Demonstrating Our Collective Impact: Digging into the Data of EE Providers in CA

Learn valuable tips and strategies that will help CBP Program Leaders and your organization grow and thrive.

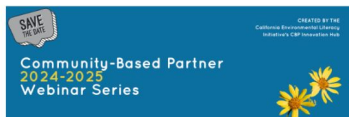
[Slides](#)



January 8, 2025 - Funding Pathways in Collaboration with Schools and Districts

Learn valuable tips and strategies that will help CBP Program Leaders and your organization grow and thrive.

[Register here](#)



February 5, 2025 - Equitable Hiring and Retention Practices

Learn valuable tips and strategies that will help CBP Program Leaders and your organization grow and thrive.



Breakout Rooms



CALIFORNIA
ENVIRONMENTAL
LITERACY
INITIATIVE

Typical Community Based Partners (CBPs)

Environmental Education Providers

Field Experiences & In-Classroom Programs, Open Spaces and Parks (national, state, county, city, land trust, etc.), natural resources management agencies, museums, aquariums, zoos, residential outdoor education, etc.

**Supplemental
Curriculum
Partners**

**Industry and
Business**

**Expanded
Learning
Partners**

**Research
Partners**

**Social
Services
Youth
Development**

**Green
Facilities
and
Operations**

**Funding
Partners**

- Curriculum
- Content Expertise
- School Programs (field trips, on site, virtual, residential)
- Teacher Workshops
- Funding
- Volunteer and Community Programs
- Technical Assistance

Discussion Questions:

1. What community partner organizations do you already work with in your county? Who might you reach out to?
2. What might be your entry point into supporting Community Based Partners? How can and might your work align?
3. What is your time and ability to add supporting CBPs to your plate?

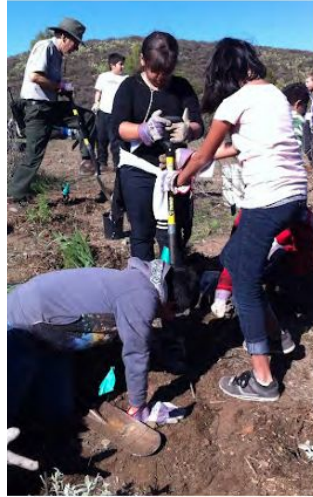


The CBP Toolkit



CALIFORNIA
ENVIRONMENTAL
LITERACY
INITIATIVE

The Toolkit



Community-Based Partner Network Toolkit

CREATED BY THE
California Environmental Literacy Initiative's
County Office of Education Innovation Hub



CALIFORNIA
ENVIRONMENTAL
LITERACY
INITIATIVE

Our Why



ELCBP networks can play a key role in supporting more equitable access to outdoor education, environmental education, green careers, and community programs that address local, state, and national environmental challenges.

NATIONAL

[Children and Nature Network](#)

[Latino Outdoors](#)

[North American Association for Environmental Education \(NAAEE\)](#)

[Outdoor Afro](#)

[School Garden Support Organization Network](#)

STATE

[California AfterSchool Network](#)

[California Association for Environmental & Outdoor Education](#)

[California Environmental Education Interagency Network](#)

[California Outdoor Schools Association](#)

[California Regional Environmental Education Community](#)

REGIONAL

[Central California Environmental Justice Network](#)

[Environmental Education Collaborative of Riverside and San Bernardino Counties](#)

[Mid-peninsula Environmental Educators Alliance](#)

[Water Energy Education Alliance](#)

LOCAL & COUNTY

[Monterey Bay Environmental Educators Network](#)

[San Joaquin County Office of Education](#)

[San Mateo County Environmental Education Community-Based Partner Network](#)

[Sonoma Environmental Education Collaborative](#)

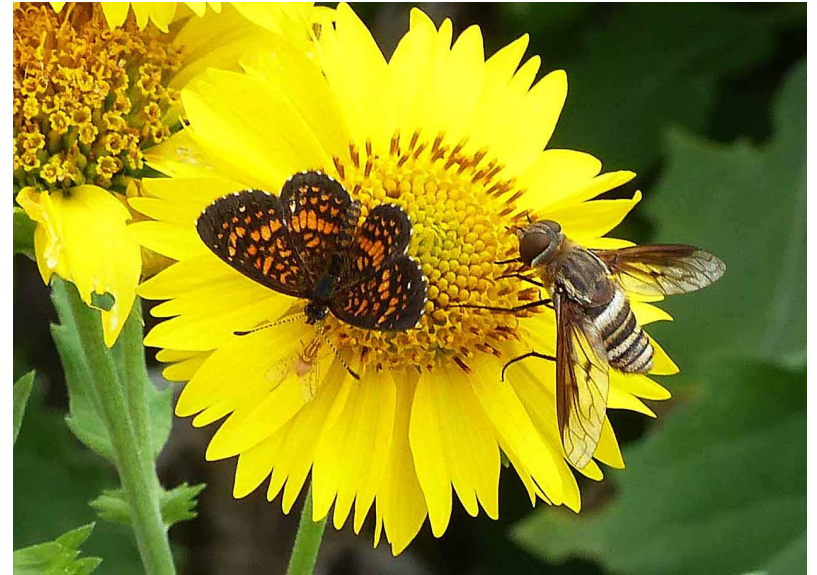
Example Community- Based Partner Networks



Responsibility and Benefits



CBP Networks are NOT required
for COEs



CBP Networks can be
Mutually Beneficial

Network Benefits

- Making education more relevant
- Combining expertise for greater impact
- Increasing collaboration and decreasing competition
- Highlighting collective impact
- Increasing quality of programs
- Innovating together
- Securing funding



Exploring the development of CBP Networks

San Joaquin COE - [Community Partners for Environmental Literacy \(CPEL\) Network](#)

Adapting a network to the community landscape

San Mateo COE-- [Community-Based Environmental Education Partners \(CBEEP\) Network](#)

An established network with shared leadership

Ventura COE- [Central Coast Environmental Education Partnership](#)

Launching a new network with a goal setting process

Findings from the Field - Key First Steps

Page 16 of the Toolkit



- Choose a network model or structure
- Engage with CBPs in your region
- Host an initial convening
- Survey the network
- Launch convenings
- Share ownership and build trust

Findings from the Field - Building Community

Page 19 of the Toolkit

- Build relationships
- Lead as a facilitator
- Uphold group agreements
- Share leadership
- Stay relevant
- Focus on goals
- Reassess needs
- Host events that showcase partners



Equity at the Forefront

Examine recruiting and organization materials:

- Whose voice is present? Who has power? Who does not?

Elevate needs and leadership from organizations led by:

- Black, Indigenous, and people of color
- Those who are serving students who have lacked access to environmental literacy instruction



Toolkit Network Self-Assessment Tool

Page 26 of the Toolkit

- Intended as a template for networks to adapt to their goals.
- Not an evaluation tool; there is no judgement in being at any stage of development in the rubric.
- Conducting periodic self-assessment and data collection yields information that can guide the revision of strategic plans and goals, provide evidence of progress, and offer support for making compelling arguments for initiatives and funding.

Network Assessment Tool

1 Beginning

2 Developing

3 High Functioning

4 Data to Collect

(Page 26-29)

Explore the rows for:

- Shared Vision
- Equitable Access

At what stage of development are CBPs in your region?



Breakout Rooms



CALIFORNIA
ENVIRONMENTAL
LITERACY
INITIATIVE

Discussion Questions

- At what stage of development are CBPs in your region?
- What needs do you have for creating and/or maintaining a CBP network?
- How do you see your organization using the Toolkit?
- Share expertise with each other about your own CBP networks, if applicable.



Closing



CALIFORNIA
ENVIRONMENTAL
LITERACY
INITIATIVE

County Office of Education Environmental Literacy Community of Practice

MEETING 1
August 29, 2024

Suite of Tools and Resources Available to
Support Environmental Literacy

MEETING 2
October 31, 2024

Curriculum Integration

MEETING 3
December 12, 2024

Community Based Partner Networks

MEETING 4
February 27, 2025

Expanded Learning

MEETING 5
April 24, 2025

Youth Programs

Please register [here](#) for all 2024-2025 meetings!



CALIFORNIA
ENVIRONMENTAL
LITERACY
INITIATIVE

Thank You COE Innovation Hub

[Amity Sandage](#), Environmental Literacy Coordinator,
Santa Cruz County Office of Education

[Julie Hilborn](#), Environmental Literacy Coordinator,
San Mateo County Office of Education

[Anthony Quan](#), STEM Coordinator, Los Angeles
County Office of Education

[Maia Steward](#), Continuous Improvement Specialist,
Mendocino County Office of Education

[Summer Belloni](#), Environmental Literacy Program
Manager, Solano County Office of Education

[Jose Marquez](#), STEM Coordinator, Stanislaus County
Office of Education

[Monica Dennis](#), Program Manager for STEAM &
Expanded Learning, Alameda County Office of
Education

[Tamara Basepayne](#), Coordinator Outdoor
Education and Environmental Literacy, Durham
Ferry STEM Programs, San Joaquin County Office of
Education

[Jennifer Mutch](#), Environmental Literacy Coordinator,
Santa Clara County Office of Education

[Katie Beck](#), STEM Coordinator, Orange County
Department of Education

[Olivia Kernen](#), Coordinator, Humboldt County Office
of Education

[Crystal Starr Howe](#), Environmental Literacy
Coordinator, San Diego County Office of Education

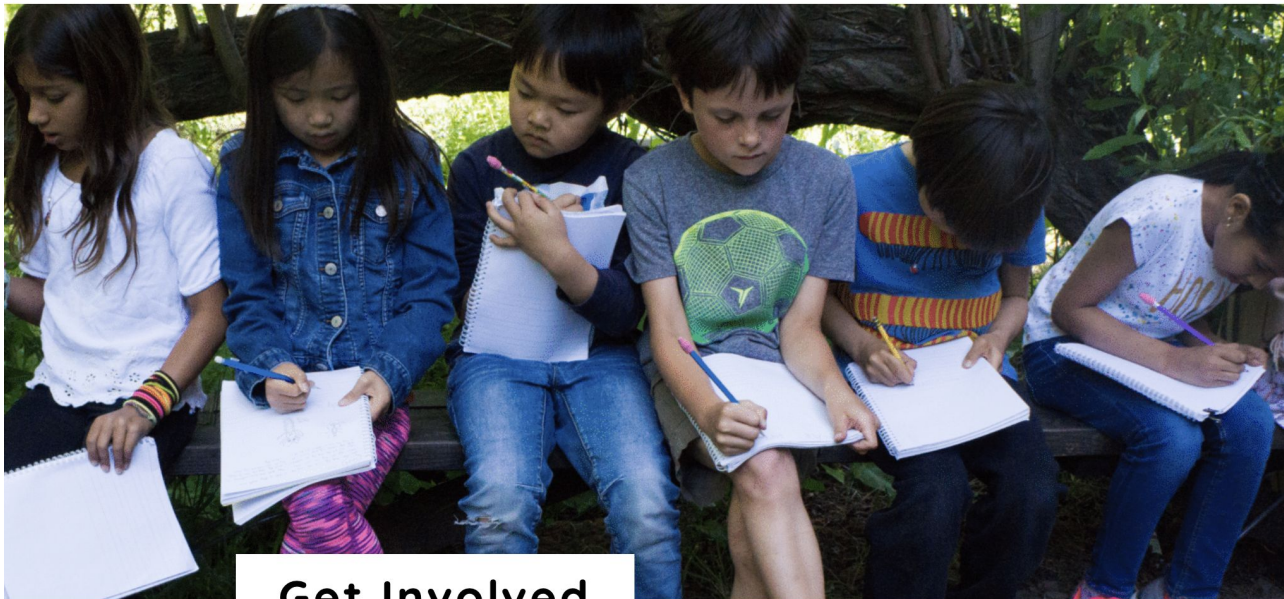


Gots & Needs

Please take a moment to fill out your:

Gots → Something that inspired you or you will carry forward from today.

Needs → Something you are hoping to discuss or learn with the CoP this year.



Get Involved

[STAY IN TOUCH](#)

[MEMBERSHIP LEVELS](#)

[JOIN CAELI](#)

[ENGAGE WITH US](#)

[IN THEIR WORDS](#)

Sign up for the newsletter at

ca-eli.org